



SURVIVAL GUIDE

CREATED BY



Erasmus Student Network
STUBA

CONTENT

INTRODUCTION	3
ESN STUBA	4
STU	5
LIVING IN BRATISLAVA	6
STUBA DORMITORY OVERVIEW	6
USEFUL LINKS FOR APPARTMENT HUNTING	10
USEFUL MAPS	11
PUBLIC TRANSPORT	13
TAXI, BICYCLES, SCOOTERS	15
ERASMUS STUDENT NETWORK	16
ADVENTURES WITH ESN	16
BUDDY PROGRAM	18
THE ESN CARD	19
OTHER INFORMATION	22
EMERGENCY CONTACTS	22
FOREIGN POLICE/TURKISH EMBASSY	23
MOBILE PROVIDERS	24
POSTAL SERVICE	24
TRANSPORTATION	24
NATIONAL HOLIDAYS	26
USEFUL WORDS AND PHRASES	27

INTRODUCTION

HELLO ERASMUS PPL!

We are Erasmus Student Network, and we are here to help you get ready for the best time of your life – ERASMUS in Bratislava! Every year, many students from all around Europe decide to visit our little home. Although it is hard to imagine what your stay here will bring, what we know for sure is that you will meet great people, experience great events, learn new things about the world and ultimately about yourself. Because honestly, in the end, you will get a new perspective and become independent.

As ESN we want to be part of your amazing experience, therefore, we are here to help you with everything you need and to make Bratislava a new home for you. We admit that in the beginning you might feel lost or insecure about all new overwhelming information falling on you from all the sides. For this reason, ESN STUBA has created this Survival Guide. The main point of this guide is to provide you with basic technical, logistic, and administrative information which is essential for your exchange stay in Bratislava. Secondly, we want to introduce you to ESN and show you what we have in store for you ;).

We strongly encourage you to read through the whole material and save it on your phone. Also, to stay updated follow our ESN Instagram page where we post the about upcoming events. You can also use it to share your experiences and questions which may help other people. We believe our interaction will keep your amazing ERASMUS experience without trouble and full of fabulous new adventures! Because together it is more fun!

See you in Bratislava!

Your ESN STUBA team

ESN STUBA

ESN STUBA stands for Erasmus Student Network Slovak University of Technology in Bratislava, Slovakia. We were founded as a section in December 2012 and from this month on we have been trying to improve ERASMUS experience of STUBA students. We are here to provide you with information about any issue arising in relation to your exchange. We are eager to create opportunities for Slovak and foreign students and promote their cooperation. We want to break down barriers between nations and encourage communication among them. One of the main ways of communication is the buddy program in which every foreign student gets their Slovak “tourist guide” student.

Follow us here:



www.stuba.esn.sk



stuba@esn.sk



ESN STUBA



esn_stuba



STU

Slovak University of Technology (hereinafter referred to as “STU”) is a modern educational and scientific institution. Since its foundation in the year 1937 more than 145,000 students have graduated. On average, 17,000 students study at STU every year. At present, STU consists of seven faculties located in Bratislava and Trnava.



SLOVAK UNIVERSITY OF TECHNOLOGY (STU)
Vazovova 5, 812 43 Bratislava / www.stuba.sk



**FACULTY OF MATERIALS SCIENCE
AND TECHNOLOGY IN TRNAVA (MTF)**
Jána Bottu 25, 917 24 Trnava / www.mtf.stuba.sk



FACULTY OF CIVIL ENGINEERING (SvF)
Radlinského 11, 810 05 Bratislava / www.svf.stuba.sk



FACULTY OF ARCHITECTURE AND DESIGN (FAD)
Nám. slobody 19, 812 45 Bratislava / www.fad.stuba.sk



**FACULTY OF CHEMICAL AND FOOD
TECHNOLOGY (FCHPT)**
Radlinského 9, 812 37 Bratislava / www.fchpt.stuba.sk



**FACULTY OF ELECTRICAL ENGINEERING
AND INFORMATION TECHNOLOGY (FCHPT)**
Ilkovičova 3, 812 19 Bratislava / www.fei.stuba.sk



**FACULTY OF INFORMATICS AND INFORMATION
TECHNOLOGIES (FIIT)**
Ilkovičova 2, 842 16 Bratislava / www.fiit.stuba.sk



FACULTY OF MECHANICAL ENGINEERING (FAD)
Nám. slobody 17, 812 31 Bratislava / www.sjf.stuba.sk

LIVING IN BRATISLAVA

STUBA DORMITORY OVERVIEW

Here we provide you some basic information about dormitories of STU. Please consider the fact that all the information is orientational and may change. The prices may vary depending on the state of the rooms.

All information is available here:

<https://ubytovanieastravovanie.stuba.sk/en/list-of-student-houses>

Student House Mladá Garda

Primarily intended for: FCHPT, SjF

Address: Račianska 3544/103, 83102
Nové Mesto

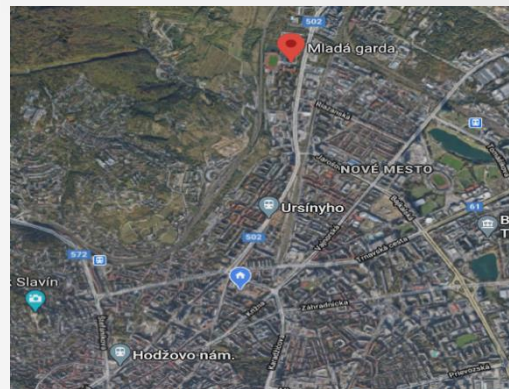
Location: 5km from the city center

(More info: www.garda.sk)

In walking distance of Faculties: None

Price: 110-140€/month

Fully equipped rooms, including shower, WC, bed linen. Gym, laundry, and medical services available for extra fees



Pros and cons

- + Good tram connection
- + Sport fields in the area
- + Garda pub
- + BBQ places in the area
- + 3 study rooms
- + Canteen
- Sometimes noisy at night
- Some rooms not renovated



Student House Dobrovičova

Primarily intended for: SvF

Address:

Dobrovičova 14, Bratislava-Staré mesto

Location: Dormitory is in the city center near Eurovea shopping center

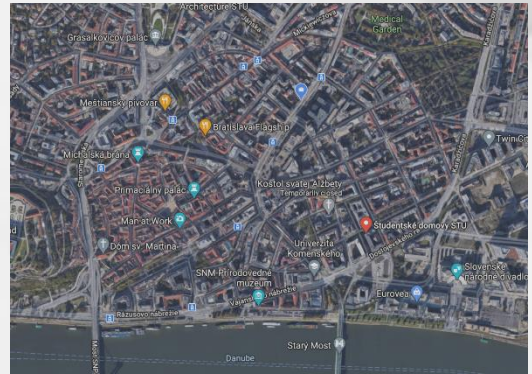
In walking distance of Faculties:
SvF, FCHPT, FAD, Sjf

Price: 110-120€/month

WC and showers are common in the hallways. Gym is available for extra fees.

Pros and cons

- + Good tram and bus connections
- + Danube river nearby
- + Not too noisy
- + Shopping center nearby
- + Direct connection to train station
- + Mostly renovated rooms
- No canteen
- Shared WC and showers
- Weak WiFi in some rooms



Student house Mladost'

Primarily intended for: FEI, FIIT, few rooms for other faculties

Address:

Staré grunty 53, Bratislava-Karlova Ves

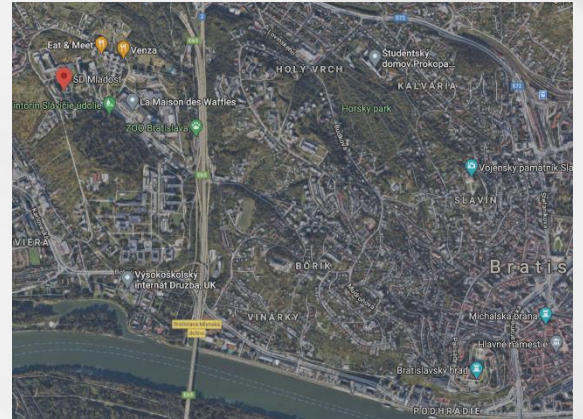
In walking distance of Faculties: FEI, FIIT

Price: 110€/month

Fully equipped rooms, including shower, WC, bed linen, fridge. Gym is available for extra fees

Pros and cons:

- +many bars, clubs, shops,
- and restaurants nearby
- + very good internet connection
- + canteen
- + inside a student village
- further from city center
- dorm is sometimes noisy at nights



Student house Jura Hronca/Bernolák

Primarily intended for: SVF, FA

Adress: Bernolákova 1, 811 07, Bratislava 1

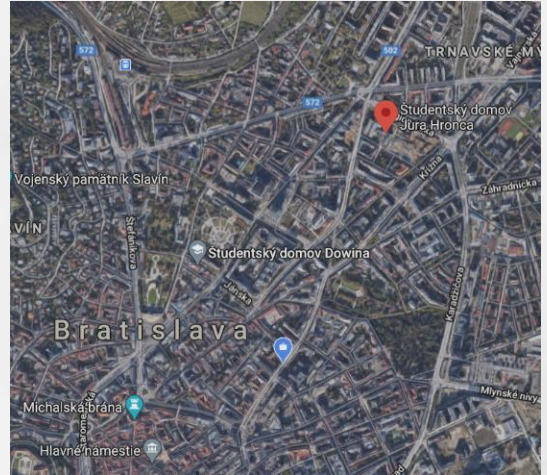
In walking distance of Faculties: Sjf, FCHPT, FAD, SvF

Price: 115€/month

What is included: Rooms are fully equipped, with shower, toilet, linen. Fitness, laundry are also available but not included in the price.

Pros and cons:

- + shopping center nearby
- + canteen
- + 5 min. walking distance from SVF, SJF, ECHPT, FA
- + good internet connection
- + printshop
- + renovated
- + best location in the city for transport
- it might be noisy at nights



USEFUL LINKS FOR APARTMENT HUNTING

<https://www.nehnutenosti.sk/>

<https://www.bezrealitky.sk/vypis/ponuka-prenajom/byt/bratislava#lat=48.74&lng=19.16&zoom=7>

<https://www.reality.sk/byty/bratislava/prenajom/#>

<https://www.zoznamrealit.sk/prenajom/byty/bratislava>

<https://www.facebook.com/groups/BratislavaTOPAPARTMENTSFLATS/>

<https://www.facebook.com/groups/FlatshareinBratislava/>

<https://www.facebook.com/groups/flatshareinba/>

<https://www.facebook.com/groups/244053712641809/>

<https://www.facebook.com/groups/byvanieprenajombratislava/>

<https://www.facebook.com/groups/807812386001622/>

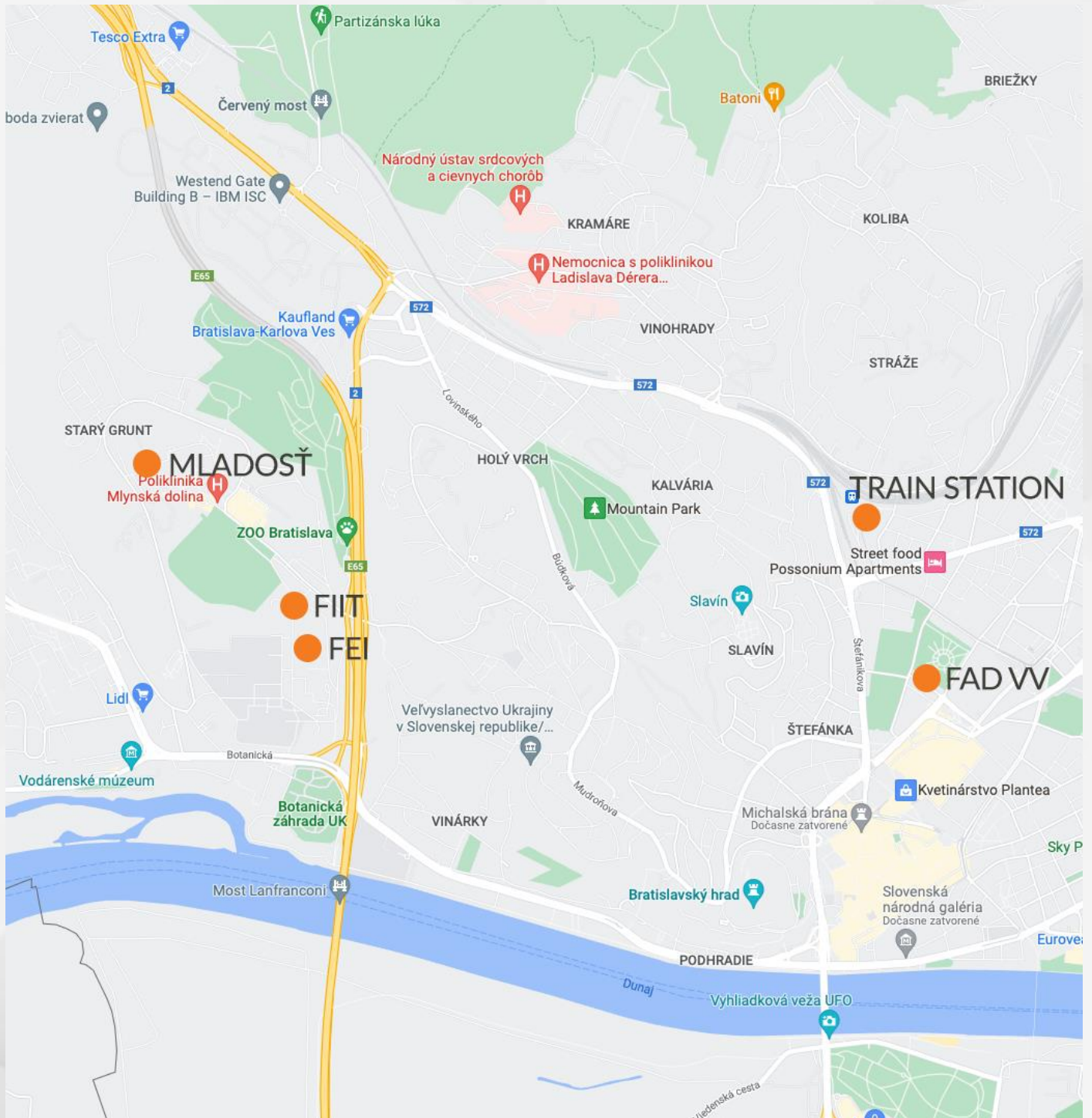
<https://www.facebook.com/groups/byvanieaprenajombabezrk/>

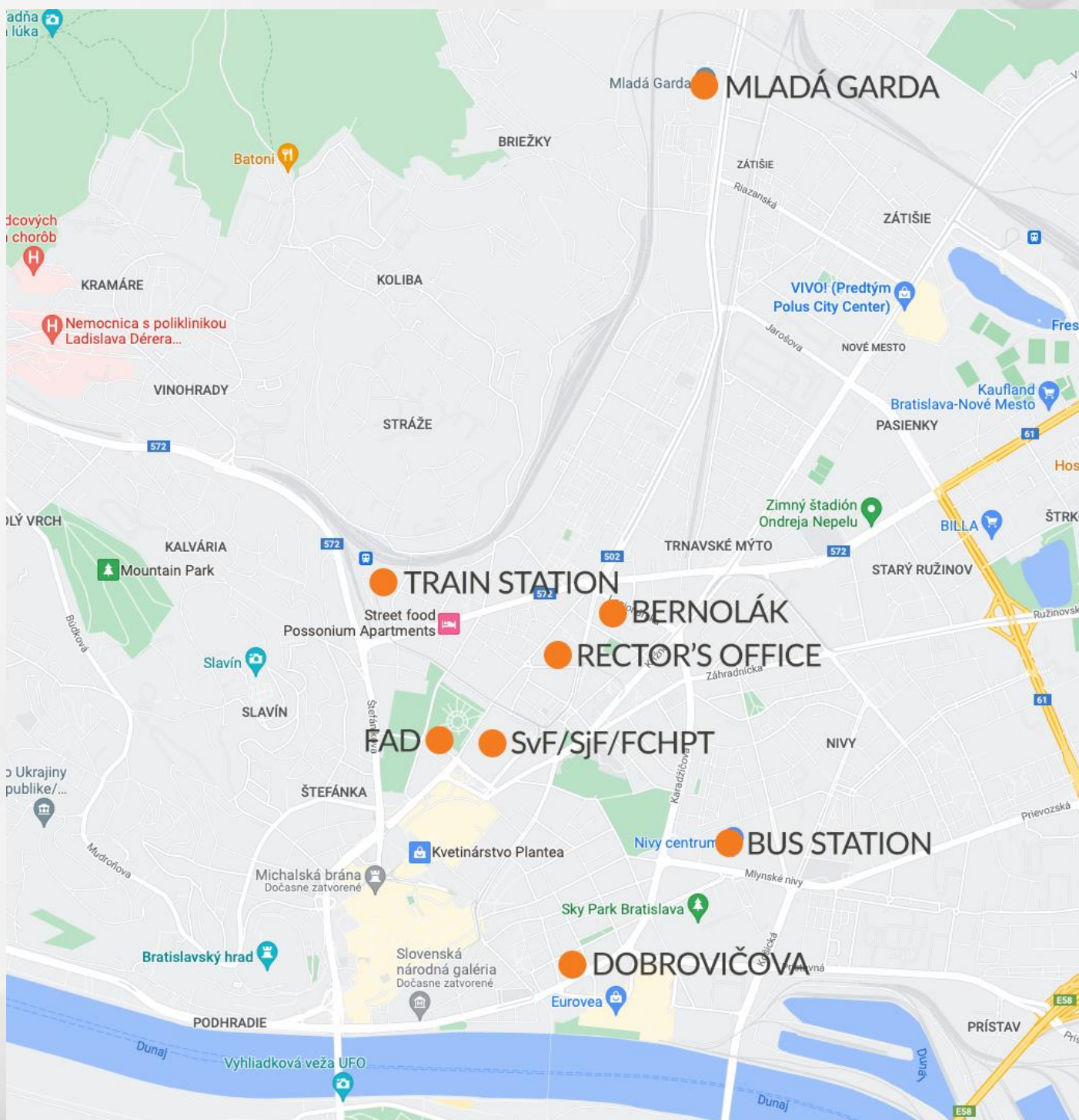
<https://www.facebook.com/groups/ByvanieaprenajomBA/>

You can also try to search for more Facebook groups using the keywords:

- Prenájom – rent
- Bývanie – living
- BA – short for Bratislava

USEFUL MAPS





PUBLIC TRANSPORT – MHD

Bratislava is not a very big city, nearly all sights and main monuments are situated in the city center and can be reached by walking. However, on your way to airport/ dormitory/ school, you might need public transport.

Buses, trams, and trolleybuses are operating approx. from 5:00 to 23:00. In the nighttime, there are several night-bus lines with prefix “N” (stands for ‘night’). Please, be aware that the service is reduced to one per hour. We highly recommend you arrive at the bus stop at least 5min before the departure, because buses don’t automatically stop at all bus stops, so they might arrive earlier. Also, at some bus stops you might have to wave as the bus approaches your stop. Most of the bus stops are equipped with live departures. Also note, that bigger stops (e.g., near Bernolák) have several stopping points spread around, so be sure to check the letters on the platform signs.

Bratislava has an understandable system of public transport consisting of buses, trams, and trolleybuses. They convey at regular intervals according to timetables, which can be found at bus stops or on the <https://imhd.sk/ba/> website (you can also use the mobile app: **imhd.sk**). Nowadays it’s also possible to use Google maps, they show the departure times accurately. You can also find any information regarding changes in the schedules, tickets, or plan your trips on the mentioned website.



TICKETS

Tickets are valid for certain period, and you can buy them in KIOSKS or TICKET MACHINES. You MUST validate them once inside the bus/tram. If the ticket inspector finds your ticket not marked or valid, you will be charged a fine. Tickets are valid for all means of public transport in the city and remain valid when changing from one mean of transport to another (based on zones). If you travel with a large luggage, you should buy an extra reduced ticket for it.



You can also buy an SMS TICKET, by sending an empty message to number 1140, 1100 or 1124. Within two minutes you should receive a message with your ticket. You shouldn't get on the bus without this SMS. Please be aware that SMS system is working only with Slovak mobile phone operators. This ticket works during both daytime and nighttime and you don't need to buy an extra ticket if travelling with large luggage.

Our recommendation for one-time tickets is an application - **IDS BK**. After registering it is also possible to buy 1/3/12 month tickets there. The application is either connected to your bank account, or you can charge your account with credit. Tickets cost less in the app.

If you use the public transport daily, we recommend you get a 1/3/12 month ticket. The longer the ticket, the less you pay per day. You can buy these through the mentioned app or at DPB selling points. All the information can be found at this link: <https://imhd.sk/ba/>.

You can also charge your ISIC, or in some vehicles pay by card for the transport, however, not all vehicles are equipped with these machines.

All the information regarding ticket pricing can be found at this link: <https://imhd.sk/ba/doc/en/>.

TAXI, BICYCLES, SCOOTERS

TAXI

Although you can find many taxi companies, we don't recommend using them. There are reported frauds, especially with foreigners. Also, the driver behavior is occasionally substandard as they don't rely on ratings. Instead, we recommend using known services such as Bolt, Uber or Hopin.



BICYCLES

The cycling routes in the city are expanding and the number of people using them is as well. Although, using a bicycle is not ideal for every trip. There is a couple bikesharing services in the city, with the most used one being Slovnaft BA

(<https://slovnaftbajk.sk/en>), where you can find many different subscription programs. Cyclists should use either cycling routes or the regular road and should not ride on the sidewalk. Wearing a helmet is not mandatory, however we highly recommend you use it!



SCOOTERS

You can also rent electric scooters from Bolt or TIER (<https://www.tier.app/en/>). It is a great way to explore the city without getting too tired. These services shut down in the winter. As for the rules, the same apply as for bicycles – you should use the road or cycling routes.



ERASMUS STUDENT NETWORK

ADVENTURES WITH ESN

Fortunately, Erasmus is not only about technical, administrative, and school stuff. It is also about great fun with many events and trips you may (and surely will) experience. For sure, you will get the most of fun each night at your dormitory, but ESN is also here to provide you with many special events. We love to have fun with you and that is why we organize a variety of parties, sport, cultural, and social events, or trips. Would you like to get together with your friends and see what's up in a theatre? Does bungee-jumping from one of the Bratislava's bridges sounds good to you? Are you sport competitive, are you animal lover or natural adventurer? Down below you will find just a small part of a list full of activities we have prepared for you!

Don't forget about our Welcome Week which will introduce you to Bratislava and give you the first taste of what's to come. will run during first week of semester. During this week, you'll be able to meet other Erasmus students and your buddies (more below), enjoy a traditional Slovak meal, or have a guided tour of the city center.

FREE TIME ACTIVITIES:

Since we know Erasmus people love having fun, we provide you with lots of crazy stuff. Paintball, trampolines, laser tag, go-karts, sport tournaments and other activities which you can enjoy with us! If you are interested, it is always our pleasure to arrange everything needed for having great time.



SOCIAL ACTIVITIES:

ESN organize amazing projects for community service in Social Erasmus programme. Spreading Erasmus information in local high schools, cheering up kids in orphanage, visiting seniors in retirement homes, helping those without a home or dog walking are only some of the projects we organize, and we would love to see you join us!

TRAVEL TIME:

You will notice that Slovakia is a picturesque country and has wonderful nature. During our trips you will visit most beautiful places of our small country; you will explore High Tatras, national parks and other heritage sites. We also arrange trips to capital cities of surrounding countries, so make time and use your weekends wisely.

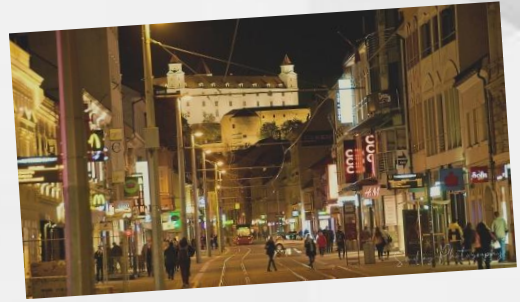
BE INTERNATIONAL:

From time to time, you can attend the Language tandem during which you can learn from each other new words and phrases of foreign languages in a funny way. Our, and hopefully yours too, favorite event is the SuperSupper. Every other week you get an opportunity to present your country in your own way. Our favorite is obviously through food you prepare, but we also look forward to seeing your traditions or other peculiarities. Other than representing your country, there will be a vote in the end with the best presentations being rewarded. If you are interested in presenting, ask your buddy!



NIGHTLIFE:

Last, but not least, ESN cares also about your nightlife. Don't miss legendary Barathons and take part in thematic parties organized just for you. Bratislava is a very live city – there won't be a weekend where you're bored!



BUDDY PROGRAM

Buddies are volunteers who are eager to interact with international students. They want to improve their language skills, spend some time with you and have fun. They are here to help you with your stay and become your personal tour guide. All of them speak English and some of them can speak other languages. You can always ask them for help when you have some administrative troubles due to language barriers. Buddies might be members of ESN, but it can happen they are provided by university itself or they are volunteering independently. If you have any troubles with your buddy or the system, you can contact the ESN Buddy coordinator at stuba.buddy@esn.sk.

WHAT WILL YOUR BUDDY DO?

- Get in touch with you before the beginning of the semester
- Help you to accommodate yourself at your dormitory
- Help you to get your student card and public transportation pass
- Help you if you have problems with administrative work
- Show you their favorite pubs
- Spend time with you



THE ESNcard

The ESNcard is the membership card of the Erasmus generation, providing you access to all the services offered by the ESN and our partners. With the ESNcard you can enjoy thousands of discounts all over Europe. In this section you will find a list of partners, who provides discounts within Slovakia. Also, all trips organized by the ESN will be discounted with an ESNcard. Learn more at ESNcard.org

HOW TO GET THE ESNCARD:

The easiest way is to buy it during the welcome week. You can ask your buddy about it or ask any ESN member. You will need a passport sized photo. After receiving your ESNcard, you will have to register it online to enjoy its full benefits.



ESN PARTNERS:

RYANAIR

Ryanair, along with Erasmus Student Network, has committed to improving Erasmus experience for all European students. That is why, from September on, when flying with Ryanair, all ESNcard holders will be able to enjoy 10% discount on up to 4 single (or 2 return) flights, free 20kg checked-in bag, and tailored travel offers, among many others.

To use the discount, go to [ESNcard.org](https://www.esncard.org) where you'll find more info.



 **ESN**
Erasmus Student Network

 **RYANAIR**
MORE CHOICE. LOW FARES. GREAT CARE.

FLIXBUS

Do you want to travel to Austria, Czech Republic, Hungary, Italy, Germany and many other European countries from Slovakia? FlixBus offers you the cheapest prices for the best quality. You can check all of the routes and connections from multiple Slovak cities here. With ESNcard you have 10% off for your next bus ticket.



EUROSENDER

Eurosender offers simple and reliable shipping services, helping more than 500,000 students organise their move when studying abroad. They collaborate with multiple international courier companies to make sure you always find the right shipping service for your needs, whether you are sending a suitcase, a package, an envelope, or organising an entire relocation.

With your registered ESNcard, you can use the promo codes "ERASMUS20" for 10% off when shipping packages, or "ERASMUSVAN" for 15€ off of van service



SLOVAK LINES

Craving exploration? Slovak Lines partners cover all of Slovakia and various European destinations, taking you practically anywhere in the world! So, ditch the hassle, grab your backpack, and hop on a Slovak Lines bus! Frequent departures, student discounts, and awesome perks make it the perfect choice for your next adventure. They offer epic one-day ski trips to the Alps, or you can catch a ride to see your favorite bands live.



With your registered ESNcard, you can get a 15% discount on your bus fares, if you claim a voucher through the [ESNcard.org](https://www.esncard.org) website.

FLATIO

Rent your flat in Bratislava for few months with Flatio. Fully equipped flats and without any commission and deposit!

Get a 100% discount for booking fee with promo code "ESNSK".



AND MORE!

You can look for more offers on the ESNcard.org or the esn.sk websites, there will also be a couple local partners that you'll get familiar with during the semester, so don't hesitate to get your ESNcard to make use of the discounts.

OTHER INFORMATION

In this section you will find information that might be helpful during your stay in Slovakia. In case you need any more information or help, don't hesitate to ask your buddy or any ESN member for help.

EMERGENCY CONTACTS

Bratislava is a relatively safe city. As in any other European country, the emergency number is **112**. If you need medical treatment, but you're not in need of an ambulance, below are addresses of emergency hospitals. If you need a pharmacy, the ones listed below are open 24/7. You can also find some more important numbers. If you need police help or firefighters, beside calling the below listed number, you can also call 112.



Int. dialling code
for Slovakia **+421**



Ambulance,
First Aid: **155**



Rapid Medical
Assistance: **16 155**



Emergency calls
of any type: **112**



Fire Service:
150



Police: **158**
City Police: **159**

Emergency hospitals:

Ružinovská 10, +421 248 234 113

Tehelná 26, +421 249 112 525

Limbová 5, +421 259 541 111

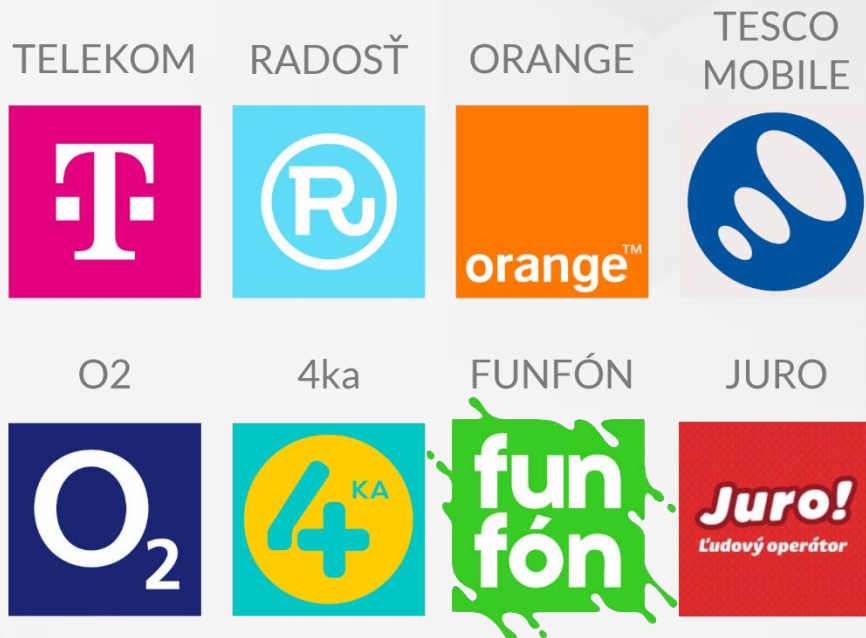
Nonstop pharmacies:

Ružinovská 12

Limbová 1

MOBILE PROVIDERS

In Slovakia you have many options in choosing a mobile provider. These are the operators:



All of them provide slightly different benefits and prices, but most students tend to choose either 4ka or Radost' due to their lower cost

POSTAL SERVICE

Bratislava's main post office is at SNP Square and is open 6 days a week, mostly open until 8 pm. In this impressive building from the last century, you will find many ornate wooden counters that differ from service they provide. If you are sending a letter, look for a sign saying "známky" which means postal stamps. Be prepared, only a few of the staff here speak English. However, if you need some more information, you can visit the website of the national post operator, Slovenská pošta here: www.posta.sk/en.

TRANSPORTATION

AIRLINES AND AIRPORTS

Bratislava's airport is the biggest in Slovakia. Regular flights link it to other Slovak cities and to many major European destinations. If you want to fly to Bratislava, you can choose between the city's own international airport (BTS) and Schwechat airport in Vienna (VIE) which is about 45km from Bratislava, and it is connected by regular shuttle buses. The Vienna airport offers more destinations and with the great connection, is used by many Slovaks for their trips. A city bus service connects the airport with the main railway station, where you can hop on other buses/trams and get to other parts of the city. Normally it takes 15 minutes by car to get from the airport to the city center.

Keep in mind the Ryanair discount with ESNcard!

RAILWAYS AND TRAINSTATIONS:

Trains in Slovakia are the safest and most affordable way to travel throughout the country. International trains to Bratislava's main railway station run from Vienna (1 hour), Budapest (3 hour), and Prague (4-5 hours) several times a day.

Free travel within the country:

Since November 2014, children, seniors, and students in Slovakia can travel by train for free (possible with trains of ŽSSR). The only thing you need is to show your ISIC and ID card at the railway station to get your RailCard. More information can be found on the official website.

NATIONAL HOLIDAYS

In Slovakia we have five days of national holiday. During these days we do not work, neither we go to school, and almost all the stores are obligated to be closed whole day. This does not affect restaurants, cafés, or gas stations, however, some of them choose to close voluntarily. Slovakia is quite a religious country which means we have ten more non-working days, which are directly connected with religious events. We recommend you put these dates in your calendar to be ready for prolonged weekends. You can better plan your trips or homecoming.



YEAR 2024

01.09. Day of the Constitution of the Slovak Republic

15.09. Day of Our Lady of the Seven Sorrows

01.11. All Saints' Day

17.11. Day of the Fight for Freedom and Democracy

24.12. Christmas Eve

25.12. Christmas Day

26.12. St. Stephen's Day

YEAR 2025

01.01. Day of the Establishment of the Slovak Republic

06.01. Epiphany (The Three Kings Day)

18.04. Good Friday

21.04. Easter Monday

01.05. Labor Day

08.05. Day of victory over fascism

05.07. St. Cyril and Methodius Day

29.08. Slovak National Uprising anniversary

USEFUL WORDS AND PHRASES

The Slovak language belongs to the group of Slavic languages. Many say it is really challenging for foreigners to pronounce or learn it. Even though English is a piece of cake in comparison to Slovak, many people here still don't speak it well. Slovak grammar is more complicated than you might expect. Nevertheless, we are putting our trust in you, and we believe you can manage to learn these short phrases, which can help you survive your semester or two in Slovakia.

Basic Phrases:

My name is... – Volám sa

Yes/No – Áno/Nie

Thank you! – Ďakujem!

I am sorry – Prepáčte.

Hello! Hi! – Ahoj!

Good morning – Dobré ráno

Good day – Dobrý deň

Good evening – Dobrý večer

Good night. – Dobrú noc

I like you – Páčiš sa mi

Excuse me, where is...

– Prepáčte, Kde je...

Excuse me (moving through a crowd) – S dovolením

Add 5€ credit (on ISIC), please

– Dobiť kredit za 5€ (na ISIC), prosím

Numbers:

1, 2, 3 ... 10 – jeden, dva, tri, štyri, päť, šesť, sedem, osem, deväť, desať

11, 12, 13 ... 19 – jedenásť, dvanásť, trinásť ... devätnásť

20, 21, 22 ... 30, 40 – dvadsať, dvadsať jedna, dvadsaťdva ... tridsať, štyridsať

50, 60 ... 100, 1000 – päťdesiat, šesťdesiat ... sto, tisíc

Food:

Chicken – Kura

Chicken breasts – Kuracie prsia

Pork (meat) – Bravčové mäso

Beef (meat) – Hovädzie mäso

Turkey (meat) – Morčacie mäso

Fish – Ryba

Schnitzel – Rezeň

French fries – Hranolky

Rice – Ryža

Boiled potatoes – Varené zemiaky

Baked potatoes – Pečené zemiaky

Pasta – Cestoviny

Vegetables – Zelenina

Dumplings – Halušky

Water – Voda

Tea – Čaj

Beer – Pivo

IT'S ABOUT TO BE LEGENDARY



Erasmus Student Network
STUBA

